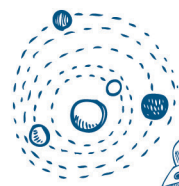
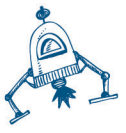


# LWC

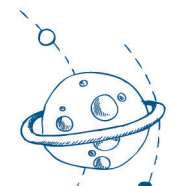
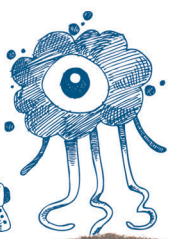
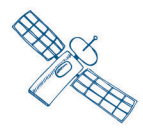
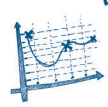
## ASTROPHYSICIEN PROMOTION 2032

UNIVERSITÉ LYON 1

DU RÊVE A LA RÉALITÉ  
[www.univ-lyon1.fr](http://www.univ-lyon1.fr)



$$K = -\frac{1}{2} \epsilon n \gamma$$



$$E = mc^2$$

